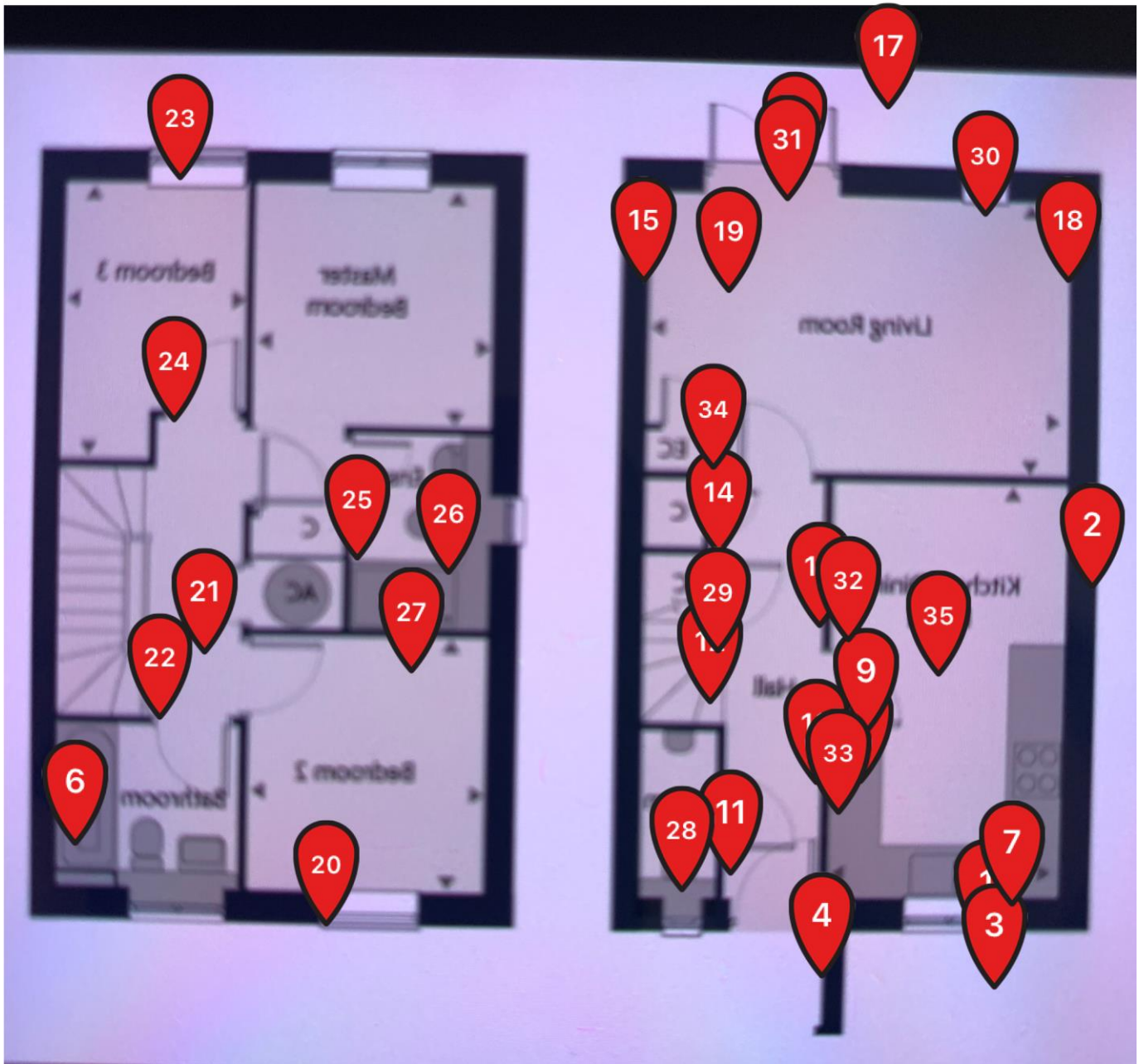


# SIMPLE

28 Dec 2023

PDF 35 Issue





### Issue 1

1

Assigned to Main Wall

The air brick is too low and blocked, the DPC may also fail.

Complete ☐



### Issue 2

2

Assigned to Right Wall

A brick is cracked and needs to be repaired

Complete ☐



### Issue 3

3

Assigned to Front Garden

The manhole cover is missing 4 screws

Complete ☐



Issue 4

4

Assigned to Main Wall

Require sealing the bottom of external electrical box

Complete ☐



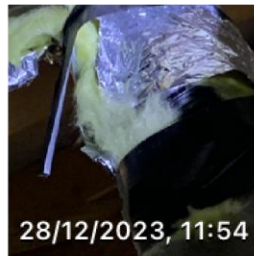
Issue 5

5

Assigned to Loft

The pipe connection of the bathroom exhaust fan is loose and needs to be repaired

Complete ☐



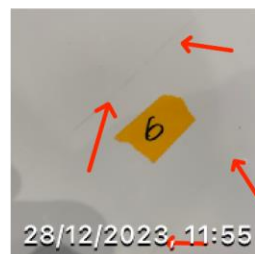
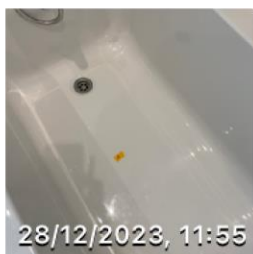
Issue 6

6

Assigned to 1/f Bathroom

The bathtub has multiple scratches

Complete ☐



## Issue 7

7

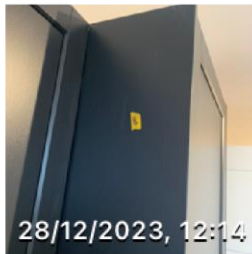
Assigned to Kitchen  
paint marking

Complete ☐

## Issue 8

8

Assigned to Kitchen  
kitchen cabinets panel scratches

Complete ☐

## Issue 9

9

Assigned to Kitchen  
Requires install door stopper

Complete ☐

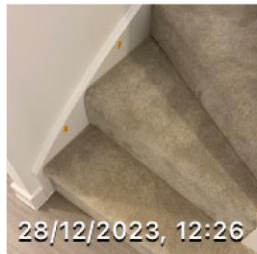
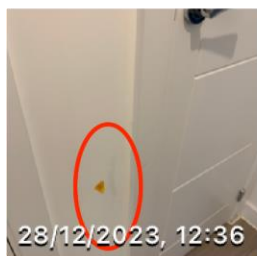
## Issue 10

10

Assigned to Hall Way  
Painting defect

Complete ☐



**Issue 11****11****Assigned to Hall Way****Painting defect****Complete** ☐**Issue 12****12****Assigned to Stair****Creaking sound when walking on the first and second stairs.****Complete** ☐**Issue 13****13****Assigned to Hall Way****Radiator scratches****Complete** ☐**Issue 14****14****Assigned to Hall Way****Painting defect****Complete** ☐**Issue 15****15****Assigned to Hall Way****Painting defect****Complete** ☐

Issue 16

16

Assigned to Patio Door

Under Door sill ,requires sealing

Complete ☐



Issue 17

17

Assigned to Rear Garden

Waterlogging of garden areas within 3m

Complete ☐



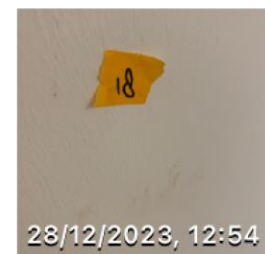
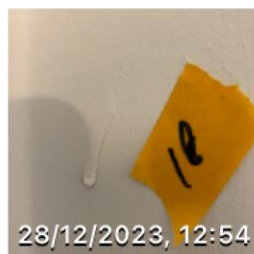
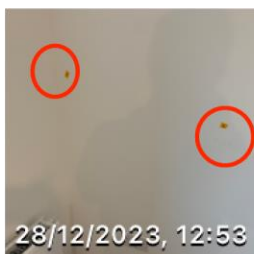
Issue 18

18

Assigned to Living Room

Painting defect

Complete ☐

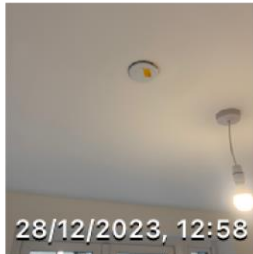


## Issue 19

19

Assigned to Living Room

Plastering defect

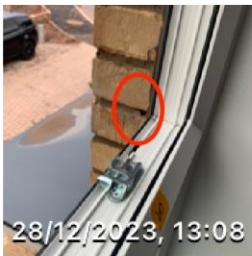
Complete ☐

## Issue 20

20

Assigned to Bedroom 2

Requires refill mortar

Complete ☐

## Issue 21

21

Assigned to Loft Hatch

Painting defect

Complete ☐



Issue 22

22

Assigned to 1/f Bathroom

Door frame loose,requires sealing

Complete ☐

Issue 23

23

Assigned to Bedroom 3

Glue mark

Complete ☐

Issue 24

24

Assigned to Bedroom 3

Door frame loose,requires sealing

Complete ☐

Issue 25

25

Assigned to Bed Room 1 Bathroom

Requires cleaning off paint mark

Complete ☐

## Issue 26

26

Assigned to Bed Room 1 Bathroom

Requires resealing

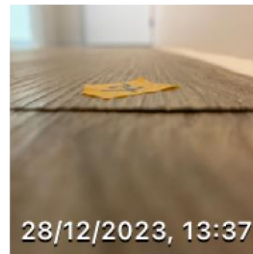
Complete ☐

## Issue 27

27

Assigned to Bedroom 1

It is suspected that there is insufficient glue and the floor is warped.

Complete ☐

## Issue 28

28

Assigned to Toilet

Requires sealing and redecoration

Complete ☐

Issue 29

29

Assigned to Stair

Nail pop

Complete ☐

Issue 30

30

Assigned to Living Room

It is suspected that there is insufficient glue and the floor is warped

Complete ☐

Issue 31

31

Assigned to Patio Door

There are nails in the silicone, please clean it

Complete ☐

## Issue 32

32

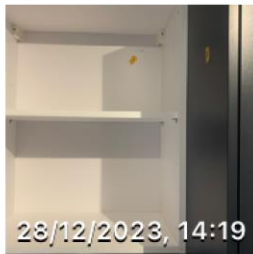
Assigned to Dining Room  
scratches

Complete ☐

## Issue 33

33

Assigned to Kitchen  
kitchen cabinets panel damaged

Complete ☐

## Issue 34

34

Assigned to Battery Room  
Battery error

Complete ☐

## Issue 35

35

Assigned to Kitchen  
Smoke alarm plastering and painting defect

Complete ☐